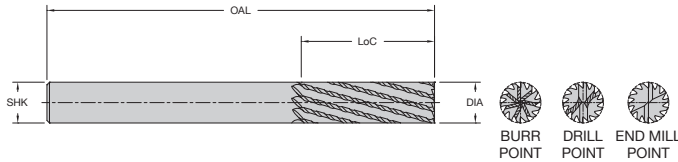
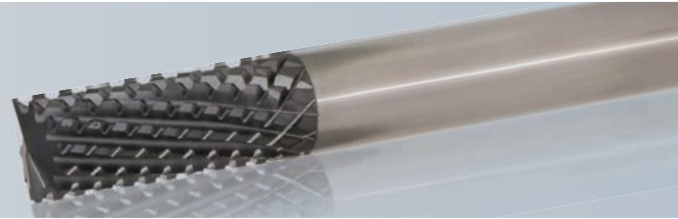


66-500 Series DFC Multi-Flute Composite Router



Designed to put you in control, LMT Onsrud's 66-500 Series DFC Multi-Flute Composite Routers give you options at the spindle to deliver results that are as efficient as they are precise. Use the 66-500 Series for roughing or finishing on carbon fiber laminates.

Features and Benefits

- Multiple flutes eliminate vibration and control tool engagement.
- Chisel tooth design creates a compression effect to prevent delamination and fiber breakout.
- Enhanced diamond film coating (DFC) for increased tool life.

Available in three point styles

- Burr end for ramping and helical interpolation.
- End mill point for plunging and helical interpolation.
- Drill point for drilling.

Part Number	Cutting DIA (mm)	LoC (mm)	SHK DIA (mm)	OAL (mm)	Flutes	Point Style
66-570	3	8	6	50	6	End Mill
66-572	3	8	6	50	6	Drill
66-574	4	11	6	50	6	End Mill
66-576	4	11	6	50	6	Drill
66-578	5	13	6	50	8	End Mill
66-580	5	13	6	50	8	Drill
66-582	6	13	6	50	10	End Mill
66-584	6	13	6	50	10	Drill
66-586	8	19	8	63	12	End Mill
66-588	8	19	8	63	12	Drill
66-590	10	22	10	72	12	End Mill
66-592	10	22	10	72	12	Drill
66-594	12	26	12	83	14	End Mill
66-596	12	26	12	83	14	Drill

Part Number	Cutting DIA (in)	LoC (in)	SHK DIA (in)	OAL (in)	Flutes	Point Style
66-501	1/8	1/4	1/8	2	6	Burr
66-502	1/8	1/4	1/8	2	6	End Mill
66-505	1/8	1/2	1/8	2	6	Burr
66-506	1/8	1/2	1/8	2	6	End Mill
66-507	1/8	1/2	1/8	2	6	Drill
66-509	3/16	3/8	3/16	2	8	Burr
66-510	3/16	3/8	3/16	2	8	End Mill
66-513	3/16	3/4	3/16	2-1/2	8	Burr
66-514	3/16	3/4	3/16	2-1/2	8	End Mill
66-515	3/16	3/4	3/16	2-1/2	8	Drill
66-517	1/4	1/2	1/4	2-1/2	10	Burr
66-518	1/4	1/2	1/4	2-1/2	10	End Mill
66-521	1/4	3/4	1/4	2-1/2	10	Burr
66-522	1/4	3/4	1/4	2-1/2	10	End Mill
66-525	1/4	1	1/4	3	10	Burr
66-526	1/4	1	1/4	3	10	End Mill
66-527	1/4	1	1/4	3	10	Drill
66-529	1/4	1-1/4	1/4	4	10	Burr
66-530	1/4	1-1/4	1/4	4	10	End Mill
66-533	3/8	3/4	3/8	2-1/2	12	Burr
66-534	3/8	3/4	3/8	2-1/2	12	End Mill
66-537	3/8	1-1/8	3/8	3	12	Burr
66-538	3/8	1-1/8	3/8	3	12	End Mill
66-539	3/8	1-1/8	3/8	3	12	Drill
66-541	3/8	1-1/4	3/8	3	12	Burr
66-542	3/8	1-1/4	3/8	3	12	End Mill
66-545	3/8	1-1/2	3/8	4	12	Burr
66-546	3/8	1-1/2	3/8	4	12	End Mill
66-549	1/2	1	1/2	3	14	Burr
66-550	1/2	1	1/2	3	14	End Mill
66-551	1/2	1	1/2	3	14	Drill
66-553	1/2	1-1/2	1/2	4	14	Burr
66-554	1/2	1-1/2	1/2	4	14	End Mill
66-557	1/2	2	1/2	4	14	Burr
66-558	1/2	2	1/2	4	14	End Mill